



Knee Arthroscopy Surgery

Recommended accessories:
 230000760 Donut head gel pad x1
 230000769 Torso section gel pad x1
 121000294 Arm rest x2
 121000532 Knee support



Rectal Surgery

Recommended accessories:
 121000294 Arm rest x2
 121000347 Foot plate 1pair
 121000348 Notched clamp x2
 121000355 Iliac support x1



Orthopedic Procedures

Recommended accessories:
 230000760 Donut head gel pad x1
 230000769 Torso section gel pad x1
 121000358 Orthopedics traction x1



Chest/Abdominal Surgery

Recommended accessories:
 230000760 Donut head gel pad x1
 230000769 Torso section gel pad x1
 121000294 Arm rest x1
 121000349 High position arm holder x1
 230000766 Universal dome shaped pad x1



Orthopedic Procedures

Recommended accessories:
 121000358 Orthopedics traction x1
 121000534 Knee crutch for orthopaedic traction x1
 121000535 Installing rack of inserted rod x1



Orthopedic Procedures

Recommended accessories:
 121000358 Orthopedics traction x1
 121000533 Anti-tensile bracket for side-lying position x1
 121000349 High position arm holder x1



CORPORATE HEADQUARTER

HEYER Medical AG
 Carl-Heyer-Str. 1/3, 56130 Bad Ems, Germany
 www.heyermedical.de

HEYER Medical AG

Carl-Heyer-Str. 1/3, 56130 Bad Ems, Germany
 Tel: +49 2603 791 0
 Fax: +49 2603 791 200
 info@heyemed.com

HEYER Medical Co., Ltd.

No.10, Chaobai Street, Yanjiao Development Zone
 065201, Sanhe City, Hebei, China
 Tel: +86 10 5841 1198
 Fax: +86 10 6371 8989
 marketing@heyemed.com

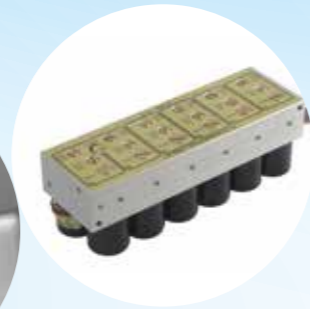
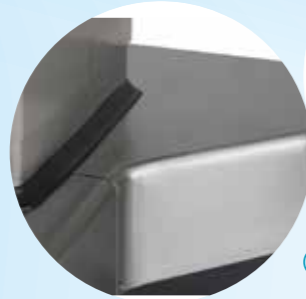


Aegistab OP850

Electronic Operating Table

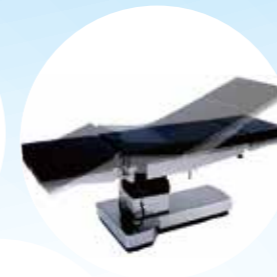


A high and multi-performance electronic operating table with a maximum load of 297kg, meeting the requirements of different surgeries.



① Premium Quality Material

- All exposed parts are made from stainless steel SUS304
- Easy to clean and disinfect
- All control parts are imported



⑤ Surgical Configuration

- Has one-key reset, flex and reflex function
- Table angles and section lengths can be adjusted within a wide range with 6 standard and 13 optional accessories, meeting the need of various surgeries



② High Efficiency Built-in Battery

- Imported from Panasonic
- Maximum 15 days working time
- Maximum 85 normal operations duration
- No request for AC power to increase the safety of surgery



③ Perfect for X-Ray Imaging

- Head and leg sections with excellent radiolucent table guarantee high quality X-ray imaging
- Exchangeable head & leg sections



④ Ergonomic Adjustment

- Convenient design for wrench of leg plate and head plate, able to control leg and head plates with one hand
- Imported gas springs guarantee smooth movement
- Imported round-hole clamps enable easy lock and unlock accessories, ensuring safety during operation
- Adjustable table height (700-1100mm) and T-shape base provide comfortable working environment



⑥ Safety

- Auto-lock system: table base will be locked automatically once the position was adjusted by controller, preventing possible misoperation
- Two control modes: manual and column control panel, allowing for backup if one is broken, ensuring the safety of surgery
- Control panel will power off automatically when there is no operation over 1 minute, avoiding any possible misoperation



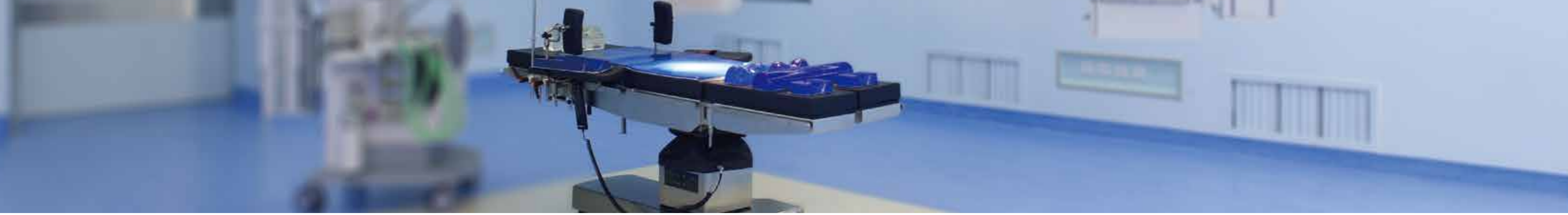
⑦ Pads

- Have soft texture and stuffed with memory foam
- Ultrasonic bonded and sealed for easy disinfection and sterilization
- Effectively reduce possibility of patient bedsores

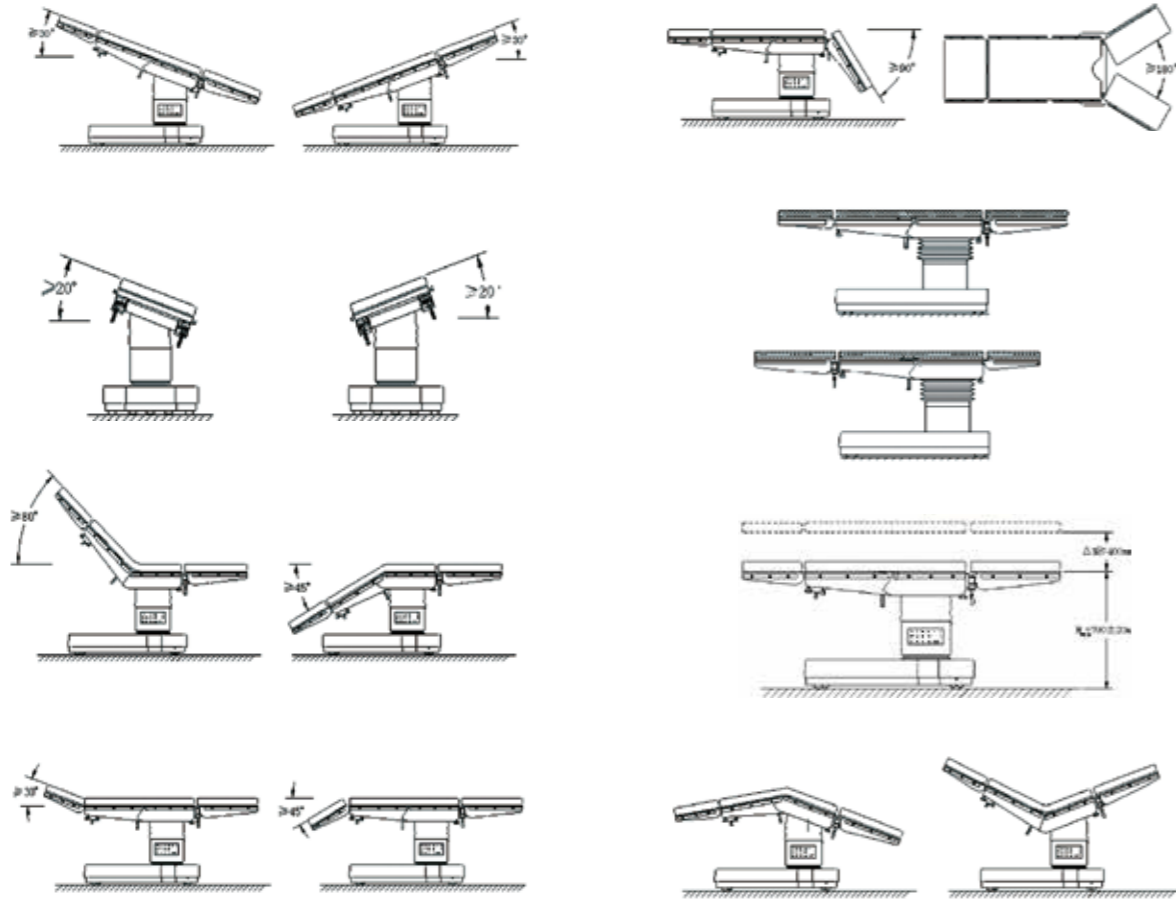


⑧ Built-in Elevator Kidney-bridge

- Has no negative effect on X-ray transparency and is able to support kidney and gall bladder surgeries efficiently



Wide adjustment range for all positions, satisfying the requirements for different surgeries.



Optional Accessories

Features:

All table accessories are made of SUS304 stainless steel. All the surfaces are easy to clean and disinfect. With 6 standard and 13 optional accessories, the surgical bed can support a multitude of body positions and procedures, meeting the requirements of most surgeries.



121000347/121000348/
Foot plate (notched clamp)



121000349/
High position arm holder



121000351/
Connection bracket



* 121000350/121000351/
Head rest(connection bracket)



121000352/121000351/
Head plate(connection bracket)



121000353/
Hand operating table



121000354/
Instrument tray



121000355/
Iliac support



121000356/
Intervertebral pad



121000357/
Drainage bowl



* 121000358/
Orthopedics traction



121000360/
Infusion frame

Technical Specifications

Table Length(mm)	2,020
Table Width(without side rails)(mm)	520
Table Height(without pads)(mm)	700 to 1,100
Trendelenburg / Reverse	30°/30°
Lateral Tilt (left/right)	20°/20°
Back Plate Up/Down	80°/45°
Head Plate Up/Down	30°/45°
Leg Plates Down	90°
Leg Plates Split(°)	180
Flex/Reflex(°)	240 / 120
Kidney-bridge Elevator Up(mm)	128
Power Input(Hz)	AC 90V-264V50/60
Cell Output(AH)	DC 24V12
Weight Capacity(kg)	300

Orthopedics Features

The orthopedics traction is designed based on EU's requirements, meeting the requirements of most orthopedics surgeries. All parts are made of SUS304 stainless steel with high strength. Therefore, the surgical table is very stable during surgeries and it is also X-ray and C-arm translucent.

OP850 is a high quality hydroelectric operating table which satisfies european clinical safety requirements for convenient and flexible operation system. It will be your best choice for modern operation room.

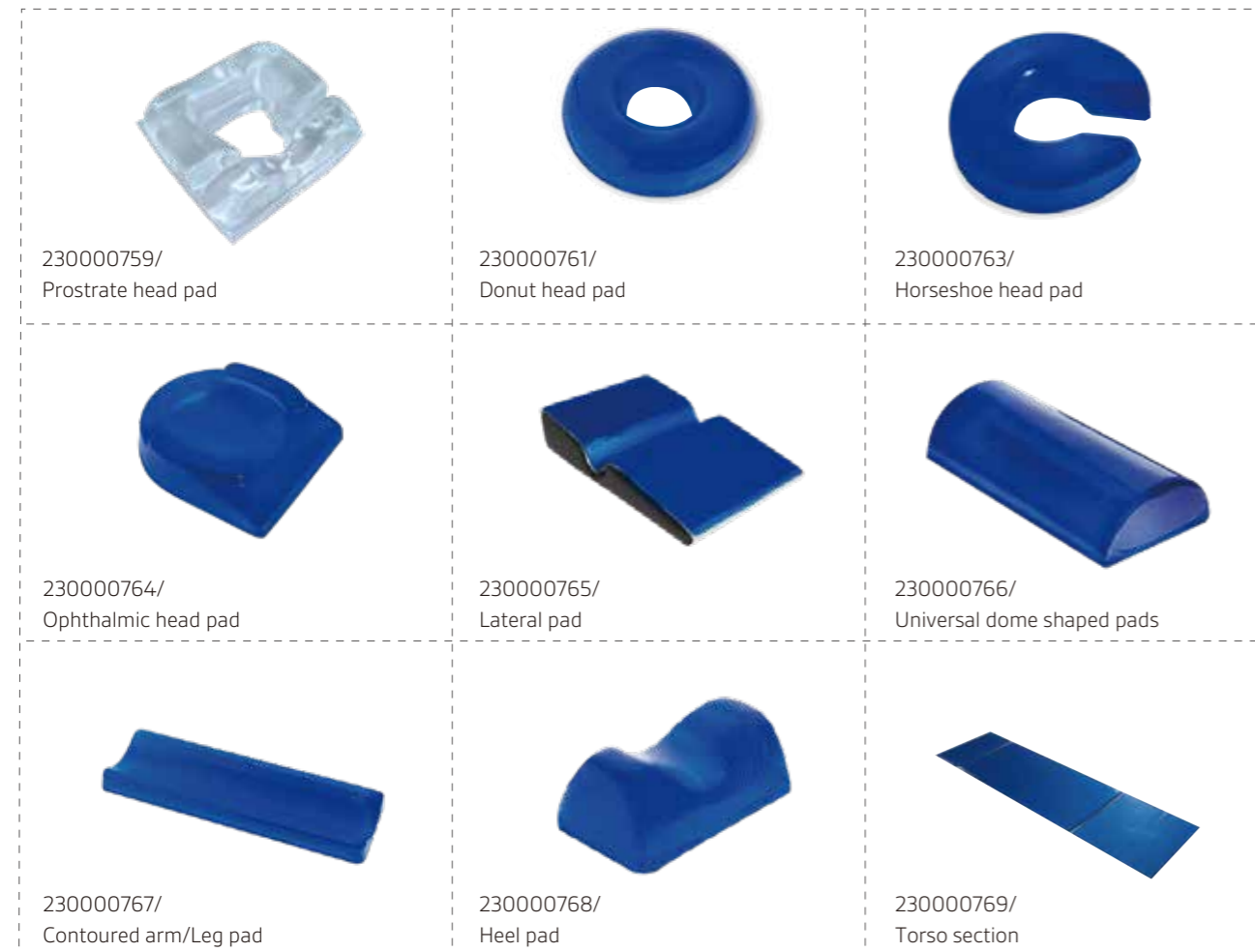
Standard Accessories



Gel Pad

Functions & Features:

The gel pad which made from viscoelastic polymer gel, offers stability and comfort during positioning. It has uniform dispersion of pressure which can avoid bedsores. It is easy to clean and X-ray translucent. It can support surgery with working environment temperature from -10°C to 50°C. It is also biocompatible with human skin and tissues. All these features make the gel pads cost-effective and durable.



Surgery Positions:



Chest/Abdominal Surgery

Recommended accessories:

- 230000760 Donut head gel pad x1
- 230000769 Torso section gel pad x1
- 121000347 Foot plate 1 pair x 1
- 121000348 Notched clamp x 2
- 121000294 Arm rest x 2



E.N.T Surgery

Recommended accessories:

- 230000760 Donut head gel pad x1



Urology/OB/Gynecology Procedures Surgery

Recommended accessories:

- 230000760 Donut head gel pad x1
- 230000769 Torso section gel pad x1
- 121000295 Knee crutch x 2
- 121000357 Drainage bowl x 1
- 121000294 Arm rest x 2



Spinal Surgery

Recommended accessories:

- 230000759 Prostrate head gel pad x 1
- 121000356 Intervertebral pad x 1
- 121000294 Arm rest x 2
- 230000769 Torso section gel pad x1
- 230000766 Universal dome shaped pad x1



Shoulder Operation

Recommended accessories:

- 121000294 Arm rest x 2
- 121000350 Head rest x 1
- 121000351 Connection bracket x 1



Neurosurgery

Recommended accessories:

- 121000294 Arm rest x 2
- 121000350 Head rest x 1
- 121000351 Connection bracket x 1
- 230000769 Torso section gel pad x1
- 230000766 Universal dome shaped pad x1